

Es 1 – funerary stele

ego voltigenei vesos

Es 3 – funerary stele

.e.go ne.i.rka.i. iuva.n.tsa.i.

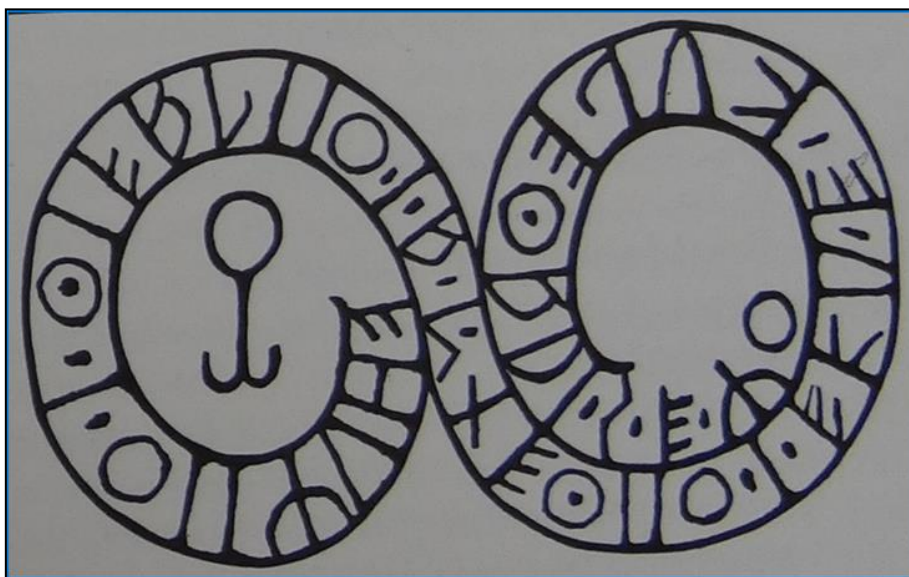
Es 11 – funerary stele

[.e.g]o kata.i. ege.s.tn[a.i.]

Pa 1 – funerary stele



*Pa 26 – ciottolone



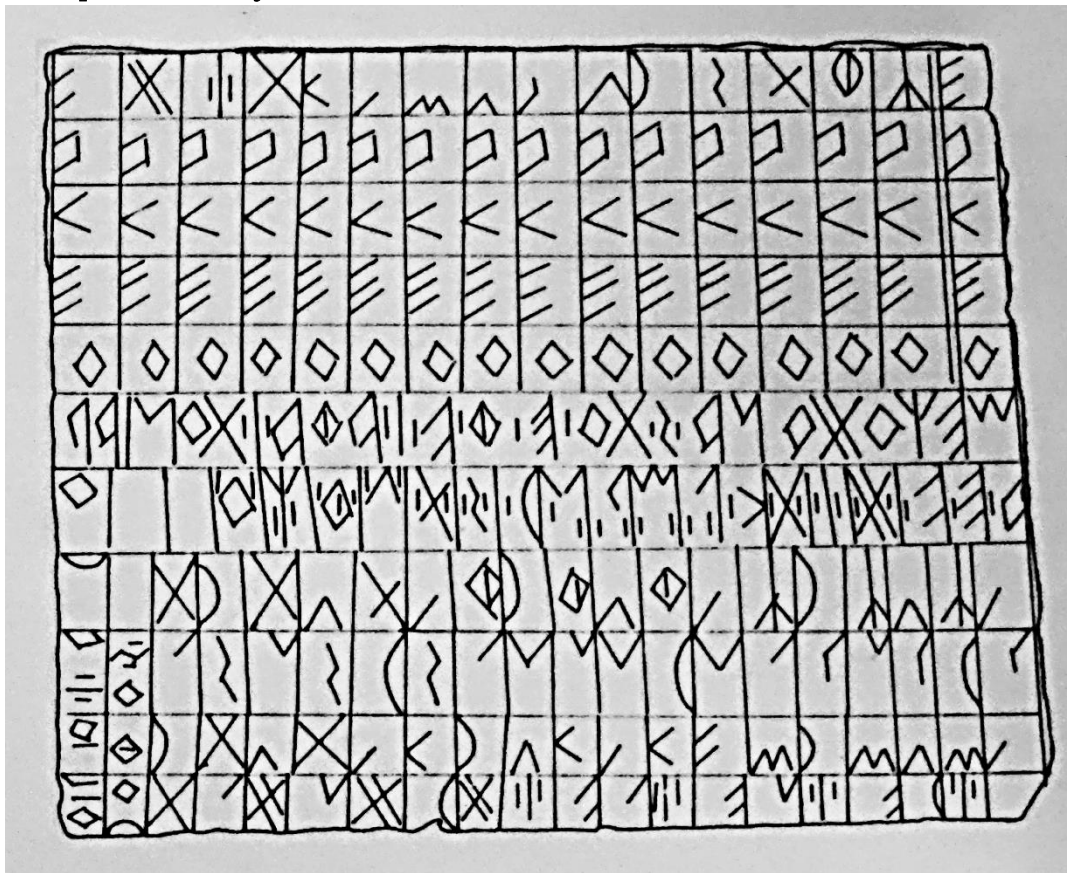
Pa 1 – funerary stele

pupone.i. e.go rako.i. e.kupetari.s.

***Pa 26 – ciottolone**

vhugio.i. tivalio.i. a.n.detio.i. eku .e.kupetari.s. ego

Es 23 – Complete abecedary and dedication



Es 25 – Consonant groups and dedication



Es 23 – Complete abecedary and dedication

(1) v d h θ k l m n p ś r s t b g e

(2-5) a ke o (repeated 16 times)

(6) mego dona.s.to .e.b. vhaba.i.tśa pora.i. .o.p iorobo.s.

(7) .a. .e. .v. .d. h .θ. <i.> .k. .l. .m. <n.> .p. .ś. .r. .s. .t. .u. .b. .g. .o.

(8-11) vhr vhn vhl vh dr dn dl θr θn θl kr kn kl kv mr mn ml pr pn pl śr śn śl sr sn sl tr tn tl br bn bl
gr gn gl

Es 25 – Consonant groups and dedication

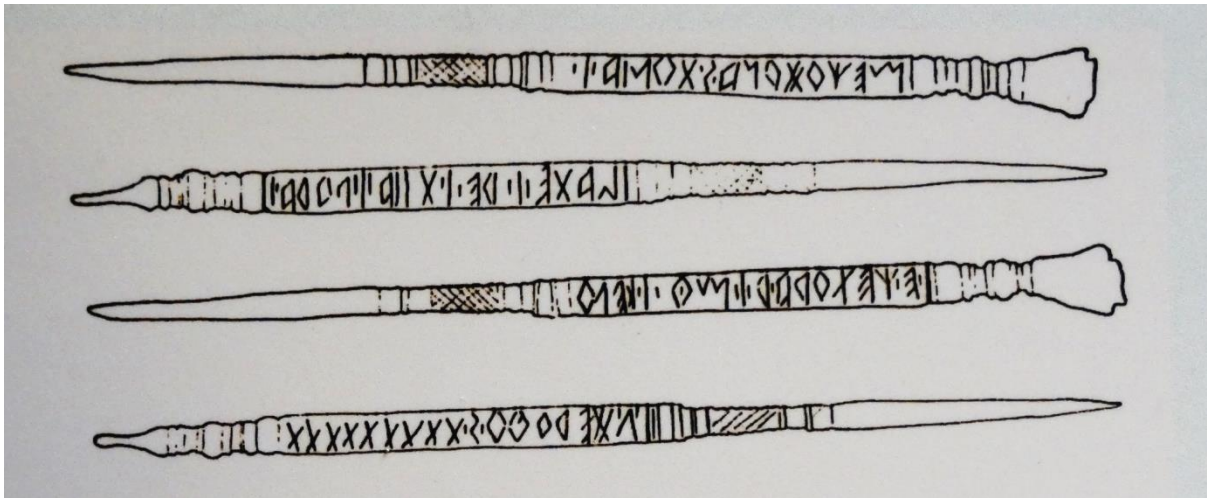
(1) [v d h θ k] l m n p ś r s t b g ii

(2-5) a ke o (repeated 16 times)

(6) vhr vhn vhl kr kn kl tr tn tl dr dn dl mr mn ml pr pn pl śr śn śl sr sn sl kr kn kl kv vh br bn bl gr
gn gl

(7) mego dona.s.to vo.l.ttiomno.s. iiuva.n.t.s. a.riiun.s. śa.i.nate.i. re.i.tiia.i.

Es 45 – stylus dedication



Lejeune 75 ter – funerary stele



Es 45 – stylus dedication

mego dona.s.to áa.i.nate.i. re.i.tiia.i. pora.i. .e.getora .r.i.mo.i. ke lo.u.derobo.s.

Lejeune 75 ter – funerary stele

ego vhontei ersiniioi
vineti karis vivoi oliialekve murtuvoi atisteit